

Standard Operational Procedures (SOPs) for dietary assessment in epidemiological studies

Dagrun Engeset,
Institute of Community Medicine,
University of Tromsø



Objective

- to generate SOPs for a dietary assessment methodology that allows quantitative and detailed characterisation of individuals regarding their dietary intake
 - to generate the SOPs in a manner that will allow other groups to use them in epidemiological and public health studies
-

Purpose of SOPs for dietary assessment

- used to standardise methods and procedures in order to prevent systematic errors in the collection and reporting of data
 - they serve as reminders of the correct way to perform a procedure
 - makes comparison between studies easier and more reliable
-

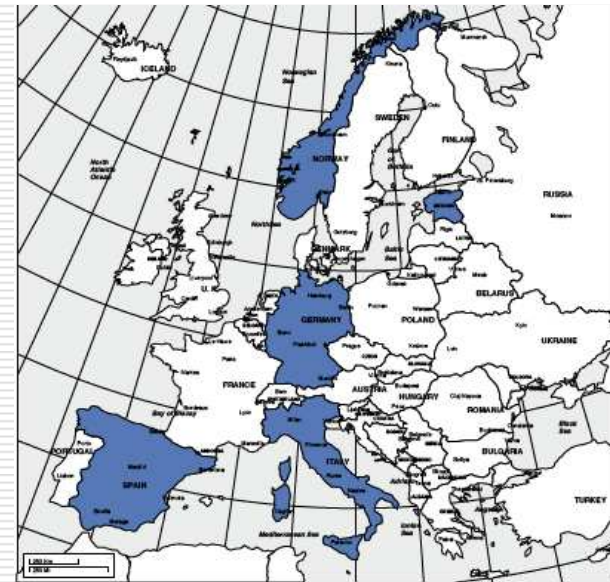
Dietary assessment methods

- ❑ Food Propensity Questionnaire (EFPQ)
 - ❑ Repeated, telephone administered 24 hour dietary recalls (24 HDR)
 - ➔ Two different approaches needed
-

Preliminary SOPs

□ Two preliminary SOPs were developed and tested in 5 countries as part of the pilot study in WP5:

- Germany
- Italy
- Estonia
- Spain
- Norway



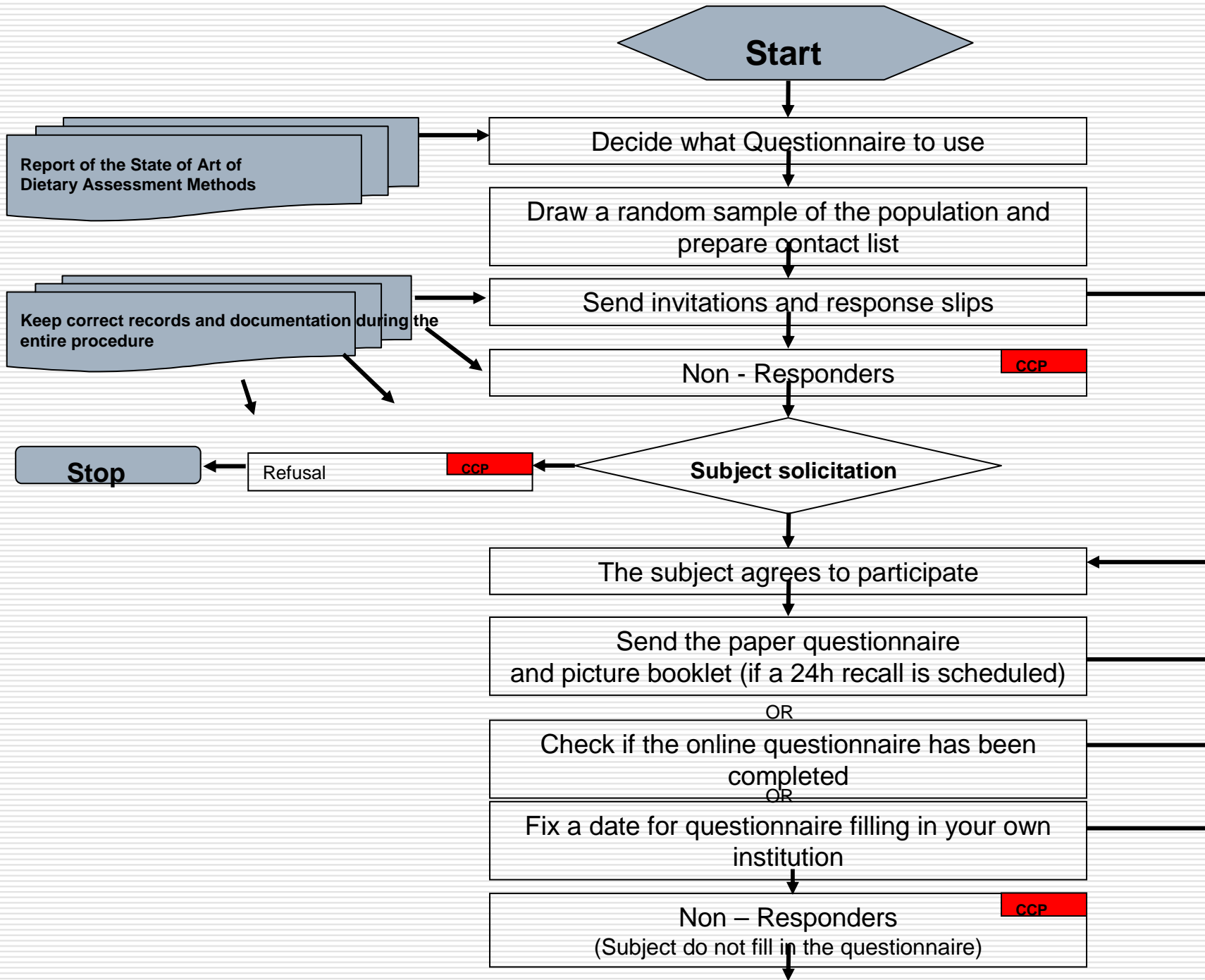
Testing of preliminary SOPs

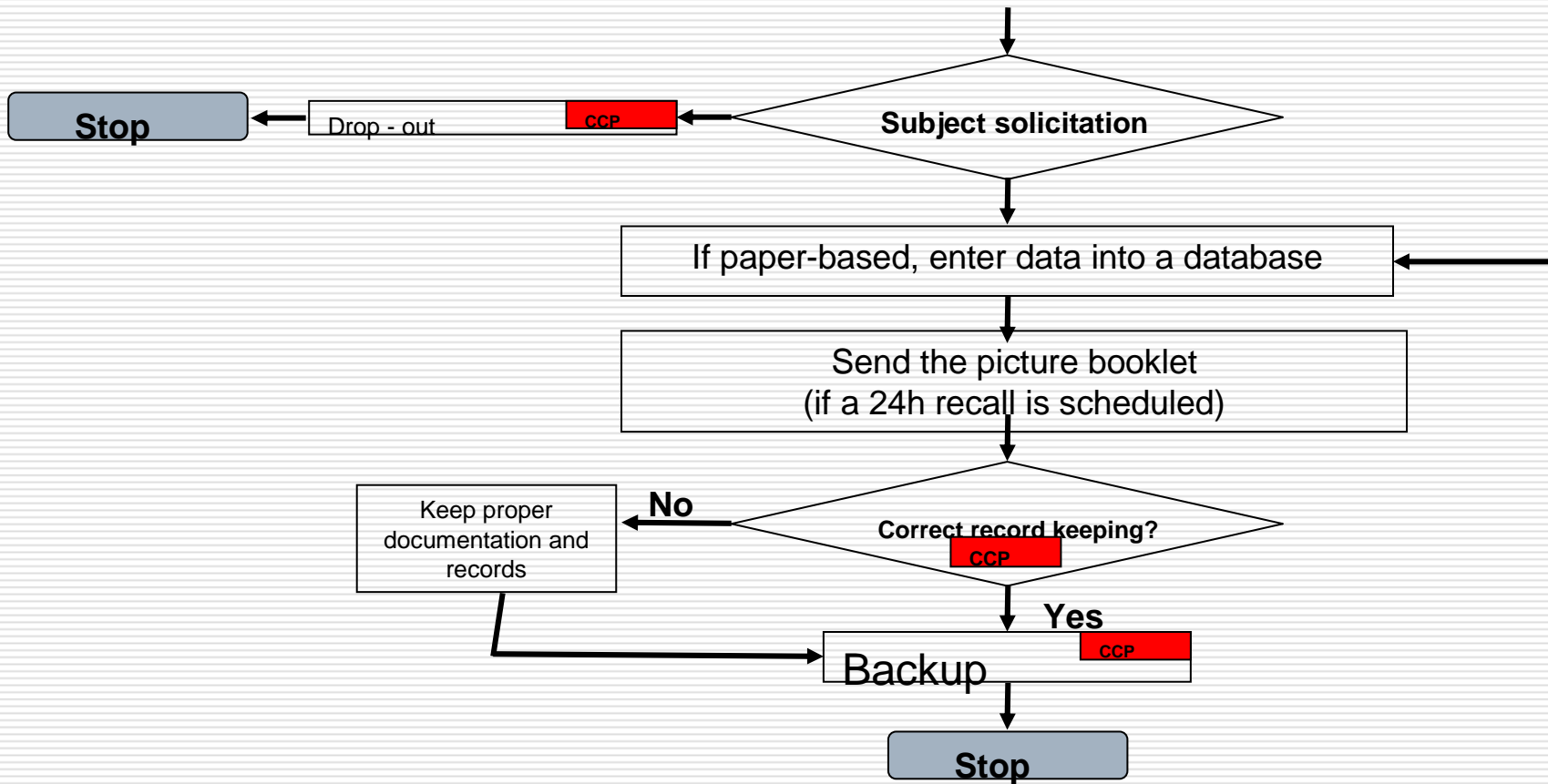
- No major problems occurred during the pilot study and there were no major deviation from the SOPs in any countries.
 - Only minor revision was needed for the final SOPs to better match other epidemiological studies
-

SOP – FFQ/FPQ

This SOP:

- applies to studies using FFQs or FPQs. It relates to procedures needed to recruit subjects for the compilation of the Questionnaire and to the storage of the collected information. The questionnaires can be web based, paper based, or a combination
 - describes how to contact the participants prior to a survey, how to deal with the information material related to the study and how to handle the preference for either web or paper based FFQs/FPQs
-

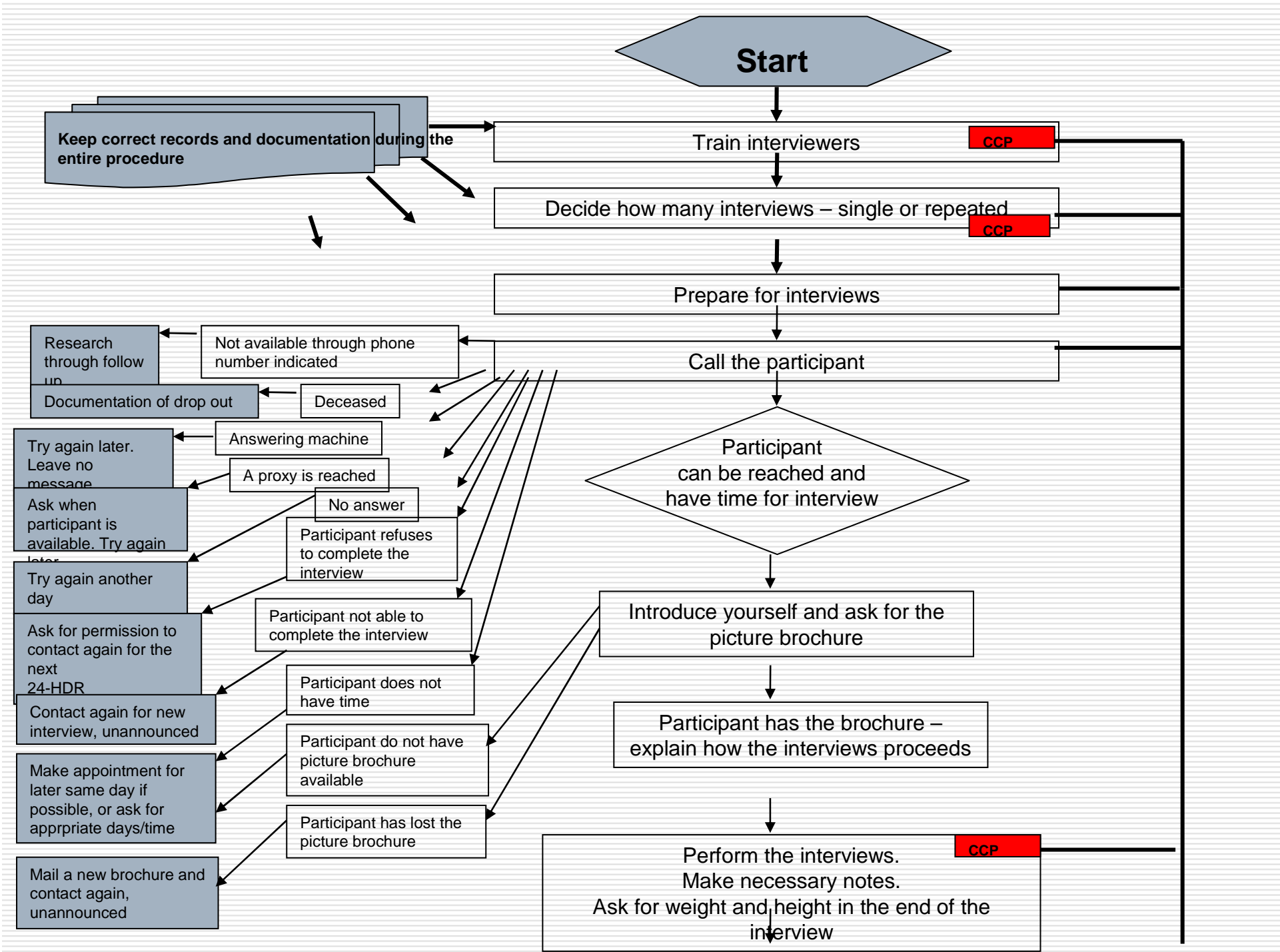


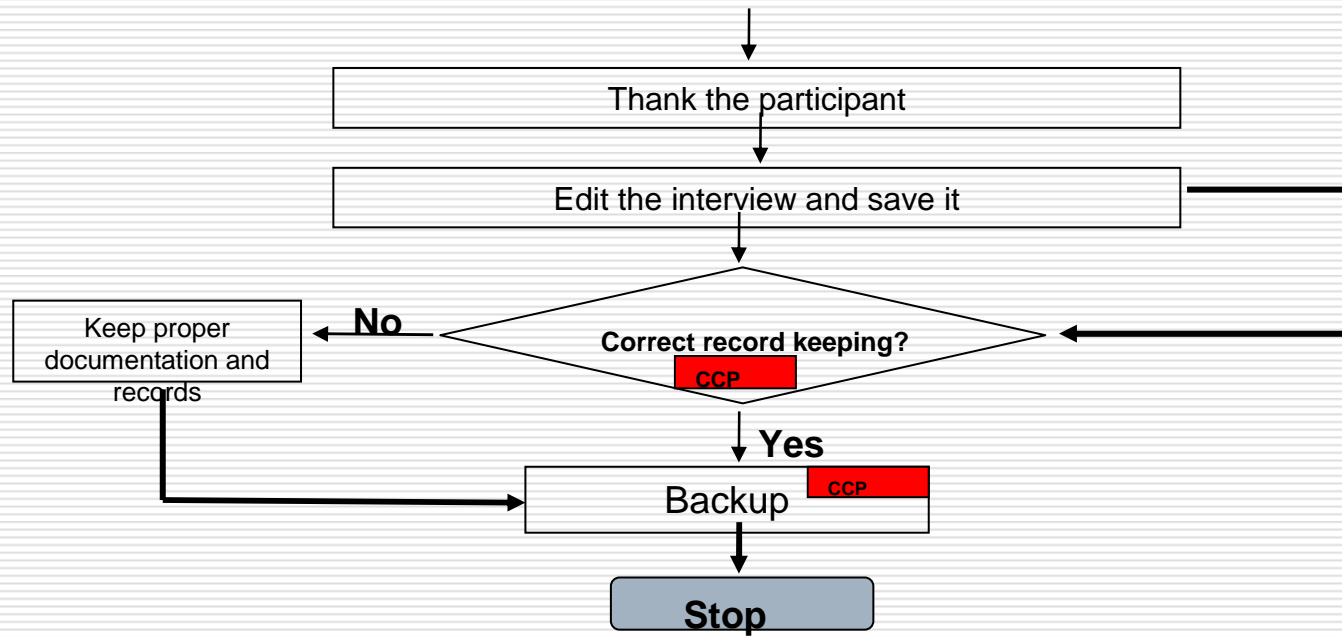


SOP – 24 HDR

This SOP:

- gives guidelines regarding common procedures on how to contact the participants for an interview
 - how to perform the interviews
 - what to do if no one answer the telephone, answering machine, et cetera.
-







Thank you!

WP6 partners:

University of Tromsø, Norway (Lead partner);
German Institute of Human Nutrition, Germany;
Institut National de la Santé et de la Recherche Médicale, France;
Universitair Medisch Centrum Utrecht, The Netherlands;
University of Cambridge, UK;
Estonian Genome Project Foundation, Estonia;
Istituto per lo studio e la Prevenzione Oncologica, Florence, Italy;
National Institute for Public Health and the Environment, The Netherlands;
Hellenic Health Foundation, Athens, Greece;
Aalborg Hospital, Denmark;
Karolinska Institutet, Sweden;
Fundacion Vasca de Innovacion e Investigacion Sanitarias, San Sebastian, Spain

